

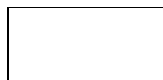
DESCRIPTIF TECHNIQUE

COLORIS

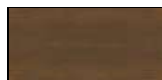
CORPS, FAÇADE, TOP



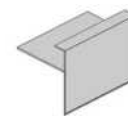
31 CHENE
CANADIEN



67 BLANC PASTEL



106 NOYER



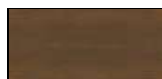
ÉLÉMENTS DE FINITION



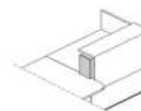
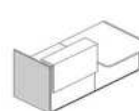
31 CHENE
CANADIEN



67 BLANC PASTEL



106 NOYER



POTEAU D'ANGLE



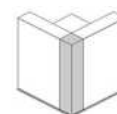
73 BLANC
BRILLANT



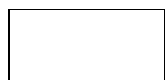
101 NOIR
BRILLANT



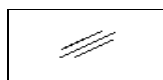
155 ANTHRACITE
BRILLANT



RÉHAUSSE



73 BLANC
BRILLANT



BLANC, VERRE
LAQUÉ LACOBEL



101 NOIR
BRILLANT



NOIR, LACOBEL



155 ANTHRACITE
BRILLANT



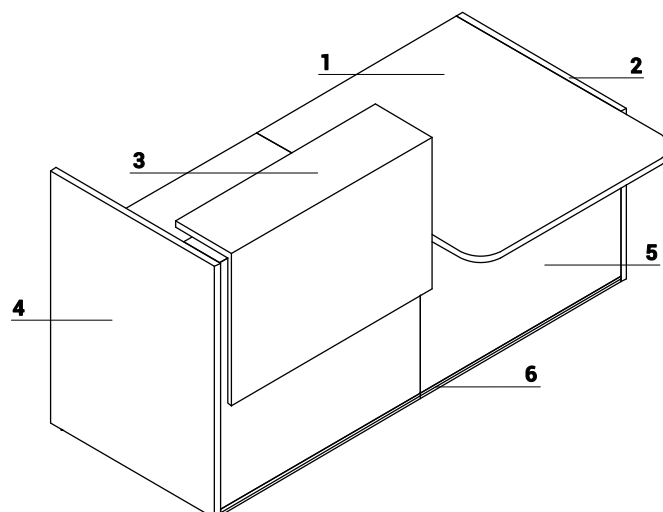
ANTHRACITE,
LACOBEL



NÉCESSAIRE POUR JONCTION PLANS DE TRAVAIL NL41

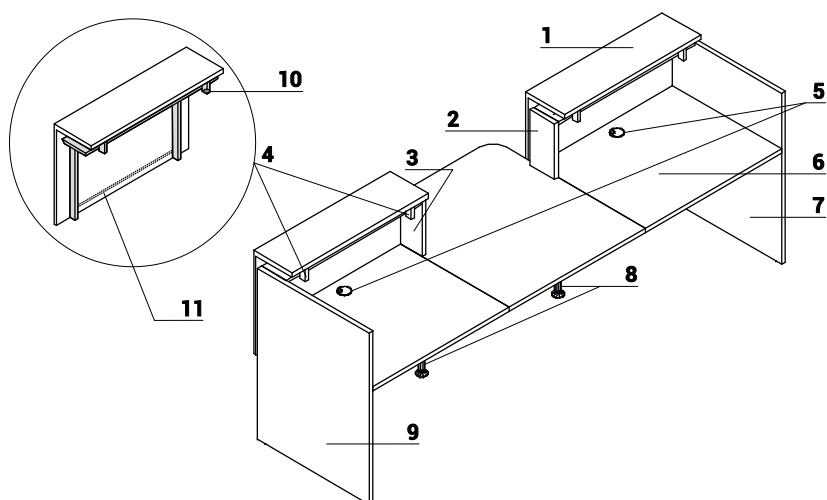


M015 BLANC
SEMI-MATE

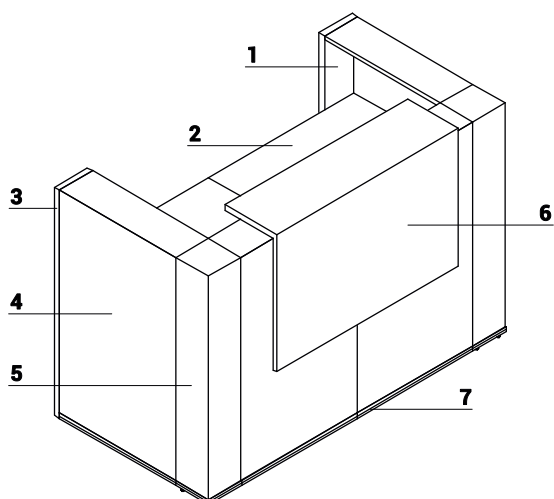


1. Plan de travail - mélaminé 28mm, chants PVC
2. Pied bas - mélaminé 28mm, chants PVC
3. Réhausse - top stratifié 28mm + verre LACOBEL 4mm, façade stratifié 18mm, brillant
4. Pied haut - mélaminé 28mm, chants PVC
5. Façade - mélaminé 18mm, chants PVC
6. Câche décoratif - PVC, couleur: M009 - aluminium semi-mate

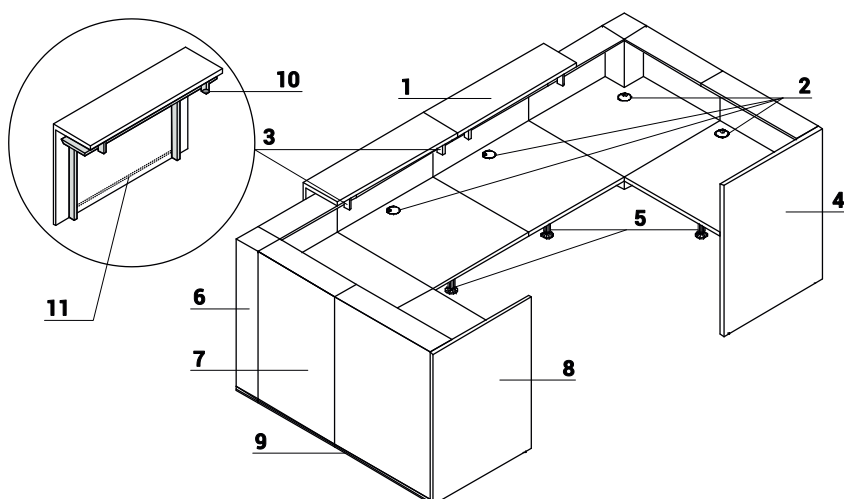
DESCRIPTIF TECHNIQUE



1. Réhausse - top stratifié 28mm + verre LACOBEL 4mm, façade stratifié 18mm, brillant
2. Joue de finition entre modules haut et bas - mélaminé 18mm, chants PVC
3. Joue de finition entre modules haut et bas - mélaminé 18mm, chants PVC
4. Fixation de la réhausse - métal peinture poudre, blanc
5. Obturateurs - Ø80mm
6. Plan de travail - mélaminé 28mm, chants PVC
7. Pied haut - mélaminé 28mm, chants PVC
8. Pied de support NL41 - en métal, nécessaire pour la jonction des plateaux
9. Pied haut - mélaminé 28mm, chants PVC
10. Interrupteur
11. Eclairage LED - sur toute la longueur de la

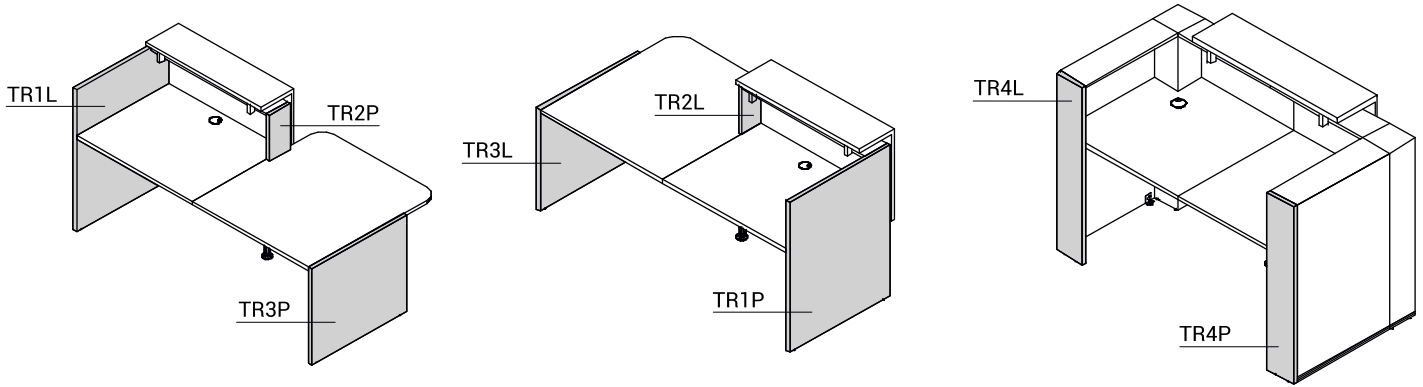


1. Pied haut - mélaminé 28mm, chants PVC
2. Plan de travail - mélaminé 28mm, chants PVC
3. Pied haut - mélaminé 28mm, chants PVC
4. Façade - mélaminé 18mm, chants PVC
5. Poteau d'angle - stratifié brillant
6. Réhausse - top stratifié 28mm + verre LACOBEL 4mm, façade stratifié 18mm, brillant
7. Cache décoratif - PVC, couleur: M009 - aluminium semi-mate

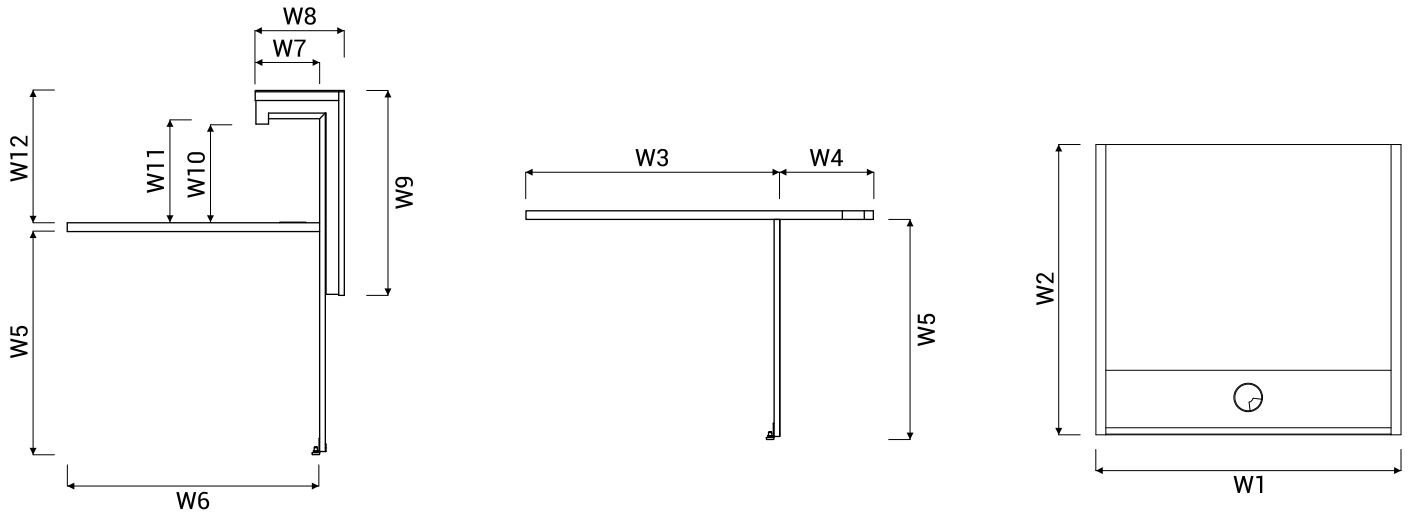


1. Réhausse - top stratifié 28mm + verre LACOBEL 4mm, façade stratifié 18mm, brillant
2. Obturateurs - Ø80mm
3. Fixation de la réhausse - métal peinture poudre, blanc
4. Pied haut - mélaminé 28mm, chants PVC
5. Pied de support NL41 - en métal, nécessaire pour la jonction des plateaux
6. Poteau d'angle - stratifié brillant
7. Façade - mélaminé 18mm, chants PVC
8. Pied haut - mélaminé 28mm, chants PVC
9. Cache décoratif - PVC, couleur: M009 - aluminium semi-mate
10. Interrupteur
11. Eclairage LED - sur toute la longueur de la

DESCRIPTIF TECHNIQUE

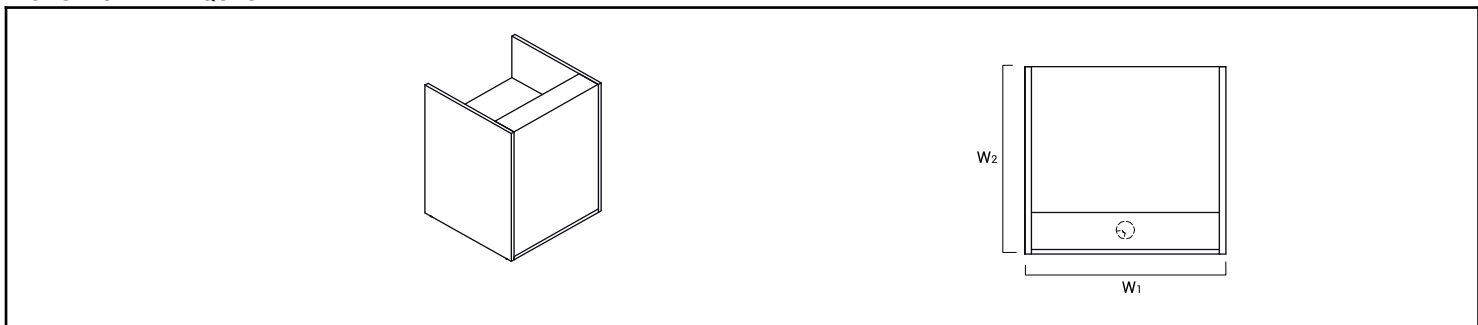


DIMENSIONS

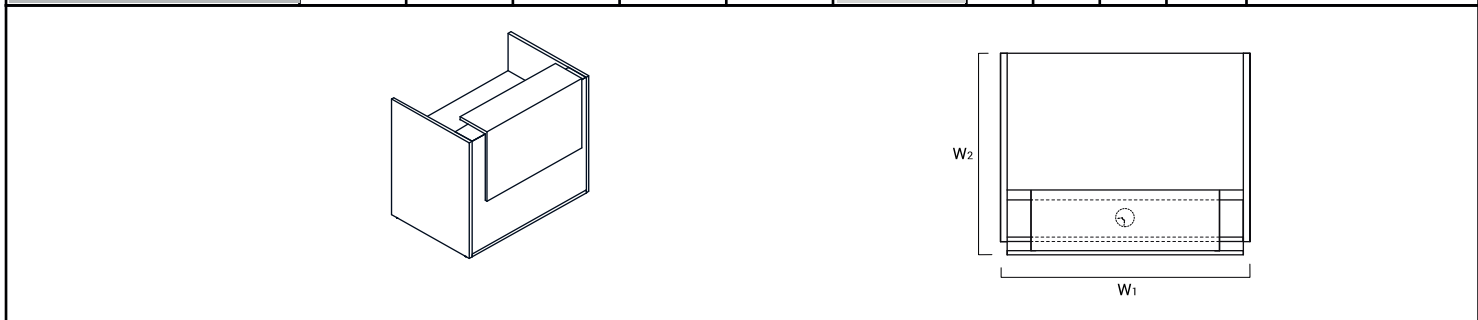


W1 - 856mm | W2 - 820mm | W3 - 818mm | W4 - 302mm | W5 - 740mm | W6 - 800mm | W7 - 205mm | W8 - 282mm | W9 - 650mm | W10 - 315mm | W11 - 322mm | W12 - 419mm

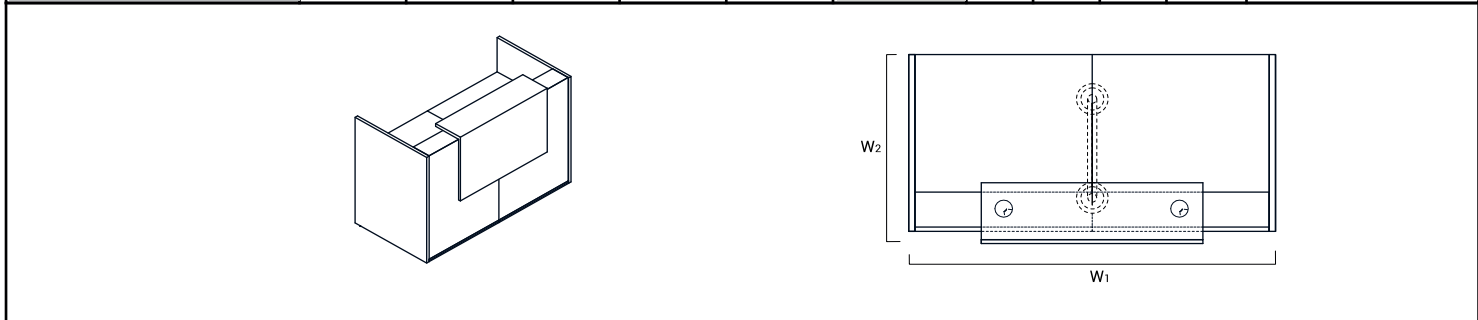
MODULES DE BANQUES



REF.	DIMENSIONS [mm]										ELEMENTS DE COMPOSITION
	W ₁	W ₂	D ₁	D ₂	H						
TRA13	856	820			1090		59.0	0.124	3		TR1L+TR08+TR1P



REF.	DIMENSIONS [mm]										ELEMENTS DE COMPOSITION
	W ₁	W ₂	D ₁	D ₂	H						
TRA14	1056	877			1159		83.0	0.320	4		TR1L+TR10+TR99+TR1P
TRA15	1256	877			1159		87.0	0.332	4		TR1L+TR12+TR99+TR1P
TRA16	1456	877			1159		89.0	0.344	4		TR1L+TR14+TR99+TR1P



REF.	DIMENSIONS [mm]										ELEMENTS DE COMPOSITION
	W ₁	W ₂	D ₁	D ₂	H						
TRA17	1656	877			1159		103.0	0.425	6		TR1L+2xTR08+TR99+TR1P+NL41
TRA18	2056	877			1159		117.0	0.449	6		TR1L+2xTR10+TR99+TR1P+NL41
TRA19	2456	877			1159		125.0	0.473	6		TR1L+2xTR12+TR99+TR1P+NL41
TRA20	2856	877			1159		129.0	0.498	6		TR1L+2xTR14+TR99+TR1P+NL41

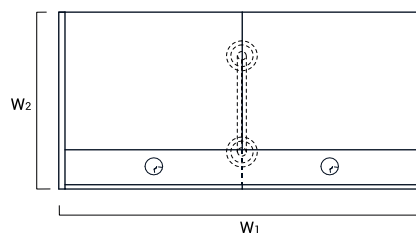
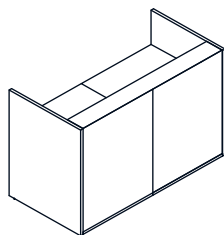
LÉGENDE:

POIDS NET

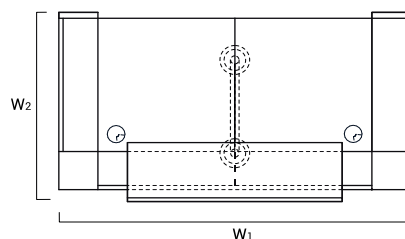
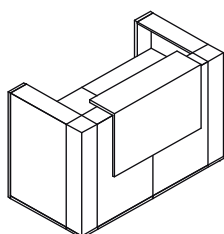
VOLUME

NOMBRE DE COLIS

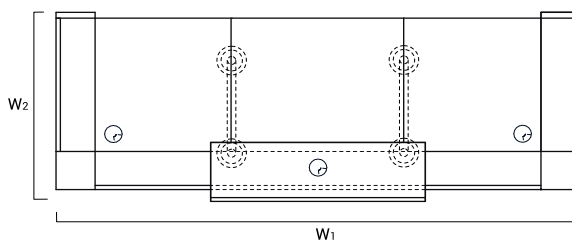
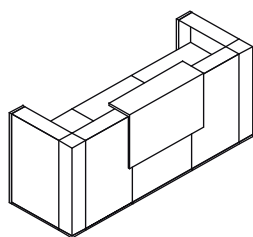
MODULES DE BANQUES



REF.	DIMENSIONS [mm]						kg	m3	pcs	ELEMENTS DE COMPOSITION
	W ₁	W ₂	D ₁	D ₂	H					
TRA117	1656	820			1090		86.0	0.242	5	TR1L+2xTR08+TR1P+NL41
TRA118	2056	820			1090		100.0	0.266	5	TR1L+2xTR10+TR1P+NL41
TRA119	2456	820			1090		108.0	0.290	5	TR1L+2xTR12+TR1P+NL41
TRA120	2856	820			1090		112.0	0.314	5	TR1L+2xTR14+TR1P+NL41

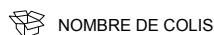


REF.	DIMENSIONS [mm]						kg	m3	pcs	ELEMENTS DE COMPOSITION
	W ₁	W ₂	D ₁	D ₂	H					
TRA42	1640	905			1159		99.0	0.460	8	TR4L+2xTR90+TR4P+TR99+NL41

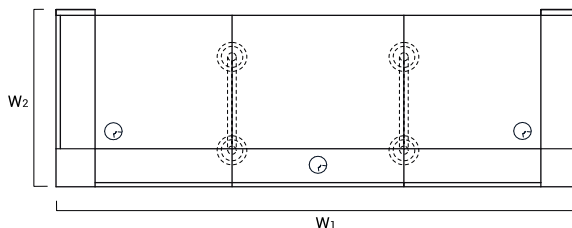
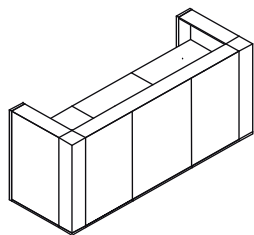


REF.	DIMENSIONS [mm]						kg	m3	pcs	ELEMENTS DE COMPOSITION
	W ₁	W ₂	D ₁	D ₂	H					
TRA21	2440	905			1159		126.0	0.577	10	TR4L+2xTR90+TR08+TR4P+TR99+2xNL41
TRA22	2640	905			1159		133.0	0.590	10	TR4L+2xTR90+TR10+TR4P+TR99+2xNL41
TRA23	2840	905			1159		137.0	0.602	10	TR4L+2xTR90+TR12+TR4P+TR99+2xNL41
TRA24	3040	905			1159		139.0	0.614	10	TR4L+2xTR90+TR14+TR4P+TR99+2xNL41

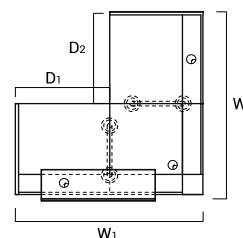
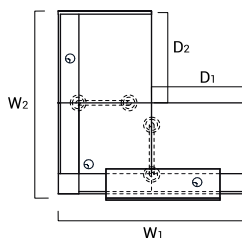
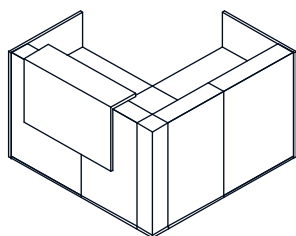
LÉGENDE:



MODULES DE BANQUES



REF.	DIMENSIONS [mm]						kg	m3	pcs	ELEMENTS DE COMPOSITION
	W ₁	W ₂	D ₁	D ₂	H					
TRA121	2440	848			1090		109.0	0.394	9	TR4L+2xTR90+TR08+TR4P+2xNL41
TRA122	2640	848			1090		116.0	0.406	9	TR4L+2xTR90+TR10+TR4P+2xNL41
TRA123	2840	848			1090		120.0	0.418	9	TR4L+2xTR90+TR12+TR4P+2xNL41
TRA124	3040	848			1090		122.0	0.430	9	TR4L+2xTR90+TR14+TR4P+2xNL41



REF.	DIMENSIONS [mm]						kg	m3	pcs	ELEMENTS DE COMPOSITION
	W ₁	W ₂	D ₁	D ₂	H					
TRA25	1648	1705			1159		141.0	0.586	9	TR1L+TR08+TR90+TR08+TR1P+TR99+2xNL41
TRA26	1848	1705			1159		148.0	0.598	9	TR1L+TR08+TR90+TR10+TR1P+TR99+2xNL41
TRA27	2048	1705			1159		152.0	0.611	9	TR1L+TR08+TR90+TR12+TR1P+TR99+2xNL41
TRA28	2248	1705			1159		154.0	0.623	9	TR1L+TR08+TR90+TR14+TR1P+TR99+2xNL41

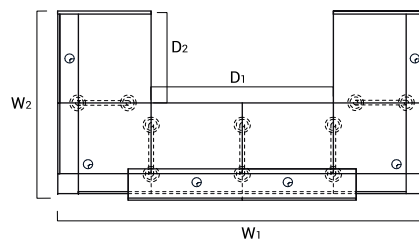
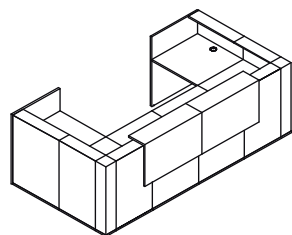
LÉGENDE:

POIDS NET

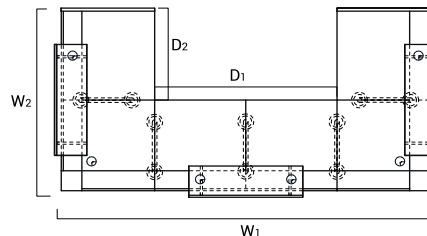
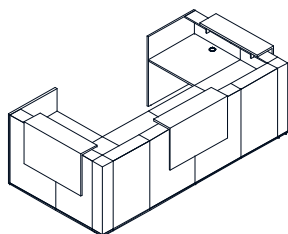
VOLUME

NOMBRE DE COLIS

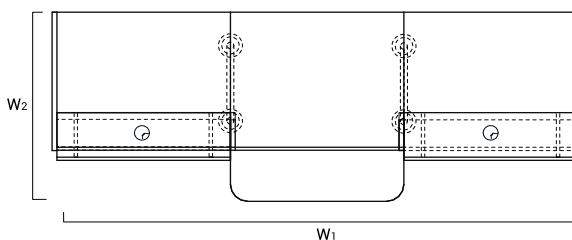
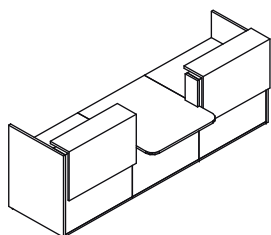
MODULES DE BANQUES



REF.	DIMENSIONS [mm]						kg	m3	pcs	ELEMENTS DE COMPOSITION
	W ₁	W ₂	D ₁	D ₂	H					
TRA29	3240	1705			1159		250.0	1.166	17	TR1L+2xTR08+2xTR90+2xTR08+TR1P+2xTR99+5xNL41
TRA30	3640	1705			1159		264.0	1.190	17	TR1L+2xTR08+2xTR90+2xTR10+TR1P+2xTR99+5xNL41
TRA31	4040	1705			1159		272.0	1.214	17	TR1L+2xTR08+2xTR90+2xTR12+TR1P+2xTR99+5xNL41
TRA32	4440	1705			1159		276.0	1.239	17	TR1L+2xTR08+2xTR90+2xTR14+TR1P+2xTR99+5xNL41



REF.	DIMENSIONS [mm]						kg	m3	pcs	ELEMENTS DE COMPOSITION
	W ₁	W ₂	D ₁	D ₂	H					
TRA129	3354	1705			1159		267.0	1.349	18	TR1L+2xTR08+2xTR90+2xTR08+TR1P+3xTR99+5xNL41
TRA130	3754	1705			1159		281.0	1.374	18	TR1L+2xTR08+2xTR90+2xTR10+TR1P+3xTR99+5xNL41
TRA131	4154	1705			1159		289.0	1.398	18	TR1L+2xTR08+2xTR90+2xTR12+TR1P+3xTR99+5xNL41
TRA132	4554	1705			1159		293.0	1.422	18	TR1L+2xTR08+2xTR90+2xTR14+TR1P+3xTR99+5xNL41



REF.	DIMENSIONS [mm]						kg	m3	pcs	ELEMENTS DE COMPOSITION
	W ₁	W ₂	D ₁	D ₂	H					
TRA33	3056	1120			1159		169.0	0.793	11	TR1L+TR10+TR2P+TR11+TR2L+TR10+TR1P+2xTR99+2xNL41
TRA34	3456	1120			1159		177.0	0.817	11	TR1L+TR12+TR2P+TR11+TR2L+TR12+TR1P+2xTR99+2xNL41
TRA35	3856	1120			1159		181.0	0.841	11	TR1L+TR14+TR2P+TR11+TR2L+TR14+TR1P+2xTR99+2xNL41

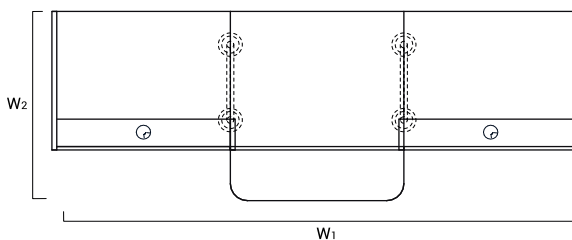
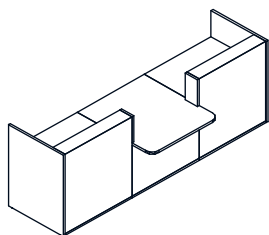
LÉGENDE:

POIDS NET

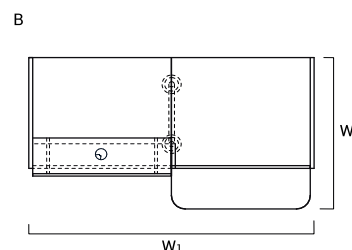
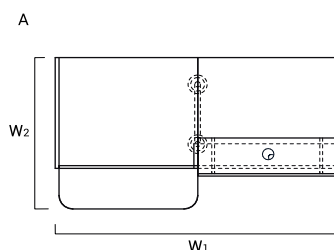
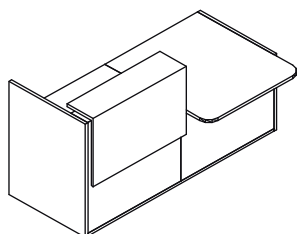
VOLUME

NOMBRE DE COLIS

MODULES DE BANQUES



REF.	DIMENSIONS [mm]						kg	m3	pcs	ELEMENTS DE COMPOSITION
	W ₁	W ₂	D ₁	D ₂	H					
TRA133	3056	1120			1090		135.0	0.426	9	TR12+TR10+TR2P+TR11+TR2L+TR10+TR1P+2xNL41
TRA134	3456	1120			1090		143.0	0.451	9	TR12+TR12+TR2P+TR11+TR2L+TR12+TR1P+2xNL41
TRA135	3856	1120			1090		147.0	0.475	9	TR12+TR14+TR2P+TR11+TR2L+TR14+TR1P+2xNL41



REF.	DIMENSIONS [mm]						kg	m3	pcs	ELEMENTS DE COMPOSITION
	W ₁	W ₂	D ₁	D ₂	H					
A TRA36L	2056	1120			1159		111.5	0.467	7	TR1L+TR10+TR2P+TR11+TR3P+TR99+NL41
B TRA36P	2056	1120			1159		111.5	0.467	7	TR3L+TR11+TR2L+TR10+TR1P+TR99+NL41
A TRA37L	2256	1120			1159		115.5	0.479	7	TR1L+TR12+TR2P+TR11+TR3P+TR99+NL41
B TRA37P	2256	1120			1159		115.5	0.479	7	TR3L+TR11+TR2L+TR12+TR1P+TR99+NL41
A TRA38L	2456	1120			1159		117.5	0.491	7	TR1L+TR14+TR2P+TR11+TR3P+TR99+NL41
B TRA38P	2456	1120			1159		117.5	0.492	7	TR3L+TR11+TR2L+TR14+TR1P+TR99+NL41

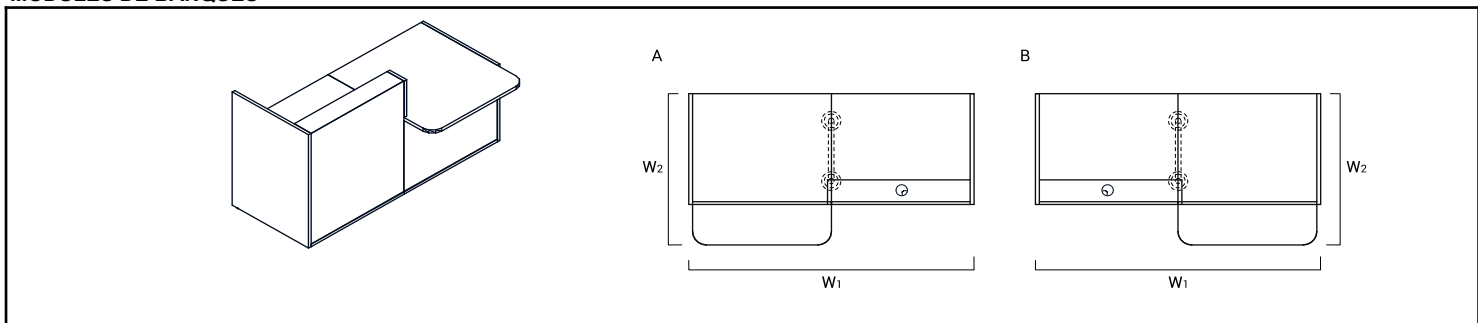
LÉGENDE:

POIDS NET

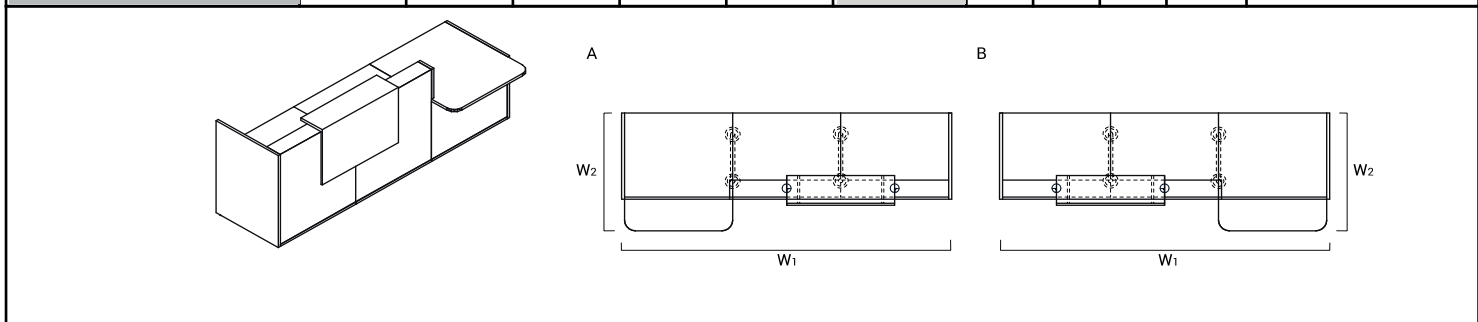
VOLUME

NOMBRE DE COLIS

MODULES DE BANQUES



REF.	DIMENSIONS [mm]					kg	m3	pcs	ELEMENTS DE COMPOSITION
	W ₁	W ₂	D ₁	D ₂	H				
A TRA136L	2056	1120			1090	94.5	0.283	6	TR1L+TR10+TR2P+TR11+TR3P+NL41
B TRA136P	2056	1120			1090	94.5	0.284	6	TR3L+TR11+TR2L+TR10+TR1P+NL41
A TRA137L	2256	1120			1090	98.5	0.295	6	TR1L+TR12+TR2P+TR11+TR3P+NL41
B TRA137P	2256	1120			1090	98.5	0.296	6	TR3L+TR11+TR2L+TR12+TR1P+NL41
A TRA138L	2456	1120			1090	100.5	0.308	6	TR1L+TR14+TR2P+TR11+TR3P+NL41
B TRA138P	2456	1120			1090	100.5	0.308	6	TR3L+TR11+TR2L+TR14+TR1P+NL41






REF.	DIMENSIONS [mm]					kg	m3	pcs	ELEMENTS DE COMPOSITION
	W ₁	W ₂	D ₁	D ₂	H				
A TRA39L	3056	1120			1159	145.5	0.596	9	TR1L+2xTR10+TR2P+TR11+TR3P+TR99+2xNL41
B TRA39P	3056	1120			1159	145.5	0.597	9	TR3L+TR11+TR2L+2xTR10+TR1P+TR99+2xNL41
A TRA40L	3456	1120			1159	153.5	0.620	9	TR1L+2xTR12+TR2P+TR11+TR3P+TR99+2xNL41
B TRA40P	3456	1120			1159	153.5	0.621	9	TR3L+TR11+TR2L+2xTR12+TR1P+TR99+2xNL41
A TRA41L	3856	1120			1159	157.5	0.645	9	TR1L+2xTR14+TR2P+TR11+TR3P+TR99+2xNL41
B TRA41P	3856	1120			1159	157.5	0.645	9	TR3L+TR11+TR2L+2xTR14+TR1P+TR99+2xNL41

LÉGENDE:

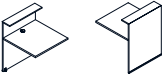




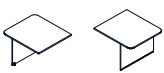

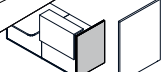

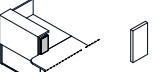

POIDS NET

VOLUME



NOMBRE DE COLIS




VUE DU PRODUIT	DIMENSIONS [mm]			REF.						REMARQUES
	LONGEUR	PROFONDEUR	HAUTEUR			kg	m3	pcs		

ELEMENTS DE COMPOSITION

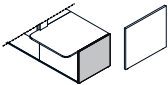
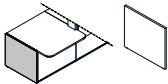
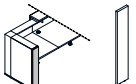
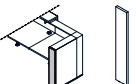
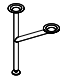
	800	818	1090	TR08		25.0	0.054	1		
	1000	818	1090	TR10		32.0	0.067	1		
	1200	818	1090	TR12		36.0	0.079	1		
	1400	818	1090	TR14		38.0	0.091	1		
	818	818	1090	TR90		36.0	0.098	2		
	1000	1120	740	TR11		30.0	0.092	1		
	1000	282	650	TR99		17.0	0.183	1		réhausse
	28	820	1090	TR1L		17.0	0.035	1		ped gauche pour éléments hauts
	28	820	1090	TR1P		17.0	0.035	1		ped droit pour éléments hauts
	28	182	350	TR2L		1.5	0.003	1		joue de finition gauche entre banque haute et banque basse
	28	182	350	TR2P		1.5	0.003	1		joue de finition droite entre banque haute et banque basse

LÉGENDE:



 POIDS NET VOLUME NOMBRE DE COLIS

VUE DU PRODUIT	DIMENSIONS [mm]			REF.						REMARQUES
	LONGEUR	PROFONDEUR	HAUTEUR			kg	m3	pcs		

ELEMENTS DE COMPOSITION

	28	820	740	TR3L		12.0	0.025	1		ped gauche pour éléments bas
	28	820	740	TR3P		12.0	0.025	1		ped droit pour éléments bas
	28	182	1090	TR4L		4.0	0.008	1		ped gauche pour éléments hauts
	28	182	1090	TR4P		4.0	0.008	1		ped droit pour éléments hauts
	585	142	712	NL41		2.0	0.063	1		ped tube

LÉGENDE:

 POIDS NET VOLUME NOMBRE DE COLIS